

### Protocol Signed Between BALSU & SUBÜ

Balsu signed a protocol with Sakarya University of Applied Sciences' Faculty of Agriculture to promote sustainability and research and development studies. The university collaborates with farmers and industry to produce innovative information and technology, and it also plays a vital role in training qualified manpower for the business World.

The Faculty of Agriculture is one of six faculties within Sakarya University of Applied Sciences, established on May 18, 2018. It comprises four departments: Horticulture, Plant Protection, Field Crops, and Landscape Architecture.



### We conducted supplier visits to ensure traceability

We are proud to report that our sustainable supplier network is expanding across all hazelnut growing provinces. In line with our responsible purchasing policy, we work closely with our trader suppliers and farmers to establish essential traceability conditions for the hazelnuts we procure.



To support our aim of fostering sustainable hazelnut production and achieving certification, we have informed our suppliers about our responsible purchasing practices, certification requirements, and traceability processes. During these meetings, we emphasize to our suppliers the importance of transparency in the supply chain, as required by the German Supply Chain Law and the European Union Corporate Sustainability Due Diligence Directive.

At Balsu, we remain committed to our responsible purchasing policy and continue to sign ethical commitment agreements with all our suppliers.

## Earthquake Shakes Cities with Seasonal Migrant Agricultural Workers

On February 6, two significant earthquakes with magnitudes of 7.8 and 7.5 struck the Kahramanmaraş province in southern Turkey, affecting 11 different provinces including Adana, Adıyaman, Diyarbakır, Gaziantep, Hatay, Kahramanmaraş, Kilis, Malatya, Osmaniye, Elazığ, and Sanliurfa.

The earthquake caused significant damage to basic services, such as transportation, communication, and infrastructure for electricity, gas, and water, in all affected cities. With an impact on approximately 14 million people, the disaster resulted in a reported death toll of 44,218 according to AFAD.

Since 2014, we have partnered with the Young Lives Foundation, whose expert officers were deployed to the affected region immediately after the earthquake, working in coordination with AFAD. Some cities in this area host seasonal migrant agricultural workers who work on the harvest of hazelnuts and other agricultural products.



In order to identify risks and assess the needs of seasonal migrant agricultural workers in our value chain, we maintain communication with agricultural intermediaries, workers, and farmers. Our interviews have revealed that the education of children is at risk due to severe damage to schools, and that safe accommodation is needed for worker groups in the affected region. After addressing these basic needs, we also recognize the importance of providing psychosocial support to the families of earthquake victims.

As part of our 'children protection' program, we have been conducting activities in the 'origin' provinces during the winter period since 2018.

Young Lives Foundation has been supporting activities since the first day of the earthquake. To access their '**Emergency Response for the Earthquake**' report, please click on the following link:

[https://genchayat.org/wp-content/uploads/2023/03/GHV\\_report\\_eng.pdf](https://genchayat.org/wp-content/uploads/2023/03/GHV_report_eng.pdf)



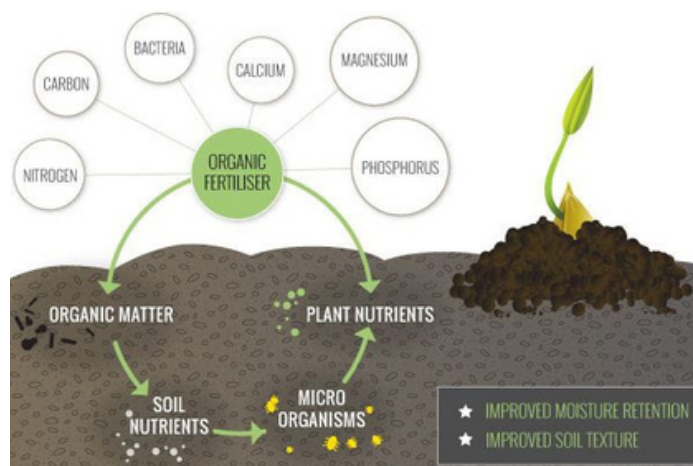


## Supporting Hazelnut Farmers with Organic Agriculture Inputs

Under our sustainable agriculture program, we embrace and implement the principles of regenerative agriculture. We provide support to farmers who use methods that promote recycling, enrich the soil ecosystem, and produce high-quality food



Since 2013, we have been connecting our farmers with various support, incentive, and certification programs. As of 2022, we have also been providing our farmers with free organic soil input support.



Since November 2022, we have distributed more than 750 tons of organic input support to our certified hazelnut producers in seven provinces located in the Eastern and Western Black Sea Regions.

Our support consists of soil-regulating organic fertilizers that enhance the activity of microorganisms in hazelnut orchards, thereby maximizing plant nutrient uptake.